

# Contents

- 2 Mission
  - 2 A Message from the President
- 

## **University Overview**

- 3 Educational Characteristics
  - 3 Educational Environment
  - 3 History
  - 4 Academic Calendar 2016
  - 4 Data & Stats
  - 5 Faculties / School Overview
- 

## **Undergraduate Faculties**

- 7 Letters and Education
  - 11 Science
  - 13 Human Life and Environmental Sciences
- 

## **Graduate School**

- 15 Graduate School of Humanities and Sciences
  - 15 Comparative Studies of Societies and Cultures
  - 16 Human Developmental Sciences
  - 16 Gender and Social Sciences / Interdisciplinary Gender Studies
  - 17 Life Sciences
  - 18 Advanced Sciences
  - 18 Cooperative Major in Human Centered Engineering
- 

## **International Exchange**

- 19 Incoming Program
  - 20 Ochanomizu University Summer Program
  - 21 Partner Universities
  - 22 Voices of Incoming International Students
  - 22 Voices of Outgoing Ochanomizu Students
- 

- 23 Centers
- 24 Science and Technology for Global Leaders special course
- 24 Library
- 25 Campus Map

## Mission

---

“Ochanomizu University will support all women, regardless of age or nationality, in protecting their individual dignity and rights, freely developing their unique qualities and capabilities, and pursuing personal learning so as to satisfy their intellectual appetites.” As a pioneer of women’s education in Japan, Ochanomizu University offers programs that will develop women capable of being opinion leaders in politics, economics, academia, culture, and other fields on the international stage.

These programs—that of the “21st century Ochanomizu University model”—focus on three areas:

- 1. Development of higher education for women into the future**
- 2. Centralization of research and 21st century liberal arts education**
- 3. Social contribution and international exchange**

Cutting-edge research and development based on new ways of thinking is a unique feature of research at Ochanomizu University.

## A Message from the President

---

Ochanomizu University—established in 1875 as Japan’s first institution of higher education exclusively for women—will celebrate the 140th anniversary of its foundation this year. Over the decades we have excelled as a true pioneer in women’s education, perennially blazing new paths for women with the desire to learn and be of service to society. Large numbers of our graduates have gone on to make outstanding contributions in academic research, education, industrial endeavor, government service, the media and various other fields, steadily building the cornerstone for further success by women in Japan.

Currently our university is answering the demands of society by cultivating women with broad perspectives and rich sensitivities who will play a key role in the future of Japan and the rest of the world. In 2004, when Japan’s national universities were assigned corporate status, Ochanomizu University announced a new school motto: “A place where all women who are motivated to learn can realize their earnest dreams.”

To realize this goal of providing support for women around the world so they can realize their dreams, we shifted toward global women’s education with the determination to be an educational institute that fosters a deep mutual understanding with people of different cultures, values and thought, and where everyone can learn from each other and grow as a person. We initiated

activities that advance the growth and development of the qualifications and ability of women of all nationalities and ages—including those in developing nations who are unable to pursue education even if they desire it.

Next we established unique educational programs in the fields of liberal arts, global education and leadership to provide a place where young women can polish their skills and learn what they must do for the world and people.

Through these educational programs, we would like our students to aim for the following:

- (1) Be aware of the complex and varied problems that society faces, and use their specialized knowledge to develop methods to investigate and solve those problems.
- (2) Develop deep mutual understanding with people of different values and thought processes, and learn from people from different backgrounds as a means to grow as a person.
- (3) Develop integrated and practical wisdom to cooperate with people of the world—always keeping consideration for others in mind—to lead society into a new era.

Ochanomizu University will fulfill our role as an institute of higher education so everyone can realize their dreams and create a fruitful future for years to come. Our wish is that our students will succeed in inspiring courage and hope for the future from the people around them and in society as a whole.

2015  
Kimiko Murofushi, Ph.D.  
President, Ochanomizu University



# University Overview

## Educational Characteristics

Tokyo Women's Normal School—the precursor of Ochanomizu University—was founded on November 29, 1875 as Japan's first institution of higher education for women. On that occasion, special funding for the school's launch was presented as an Imperial gift from Empress Shoken, the wife of Emperor Meiji and a figure renowned for her profound interest in and advocacy of women's education.

The university—which has undergone many changes in its history, from the Tokyo Women's Normal School to Tokyo Women's Higher Normal School and finally Ochanomizu University—continues to be the premier institute for higher education for talented women with high aspirations, regardless of the situation of the era.

The most distinguishing feature of the educational programs Ochanomizu University offers is the adoption of highly advanced curriculums taught in small class units. In the specialized

education curriculum in particular, the intellectual capacity that each student aims for is cultivated through small seminars, labs and practical training. In addition, students may combine different programs that fit their objectives with the main program of their department.

Another pivotal focus of the university's educational platform is "leader education" firmly grounded in the current trend toward globalization. In the quest to foster international caliber knowledge and abilities, we make keen efforts to instill superior language skills and cultural literacy applicable on the global front, in tandem with the development and practical application of educational research keyed to the lifestyles of modern women.

True to our mission statement to excel as "a place where all women who are motivated to learn can realize their earnest dreams," Ochanomizu University will continue to fulfill our role as an institution of higher education.

## Educational Environment

Ochanomizu University is located in the heart of Japan's capital, Tokyo. The campus consists of the undergraduate academic departments, graduate schools, research center wings and all other core university functions along with the affiliated nursery, elementary, junior and senior high schools.

The campus, richly landscaped in the flowers and greenery of all seasons, furnishes a truly outstanding environment known for its tranquility. The surrounding areas are also home to various national and private universities, educational and research facilities and cultural centers, making the neighborhood particularly well suited to educational pursuits and research.

The university also devotes major energy in providing a superior lifestyle environment. This includes three dormitories with over five hundred students enjoying their college life.

## History

1875 • Tokyo Women's Normal School, Japan's first institute of higher education for women and the predecessor of Ochanomizu University, opens in Ochanomizu, Tokyo

1879 • The school produces its first graduating class of 15 students

1923 • School buildings are destroyed by fire during the Great Kanto Earthquake

1932 • The school moves into new buildings at the present location (Otsuka, Bunkyo-ku)

1949 • Ochanomizu University is established as a women's university with a Faculty of Letters, a Faculty of Science and Home Economics

1963 • Graduate School of Home Economics (master's program) is established

1976 • Graduate School of Humanities and Science (doctoral program) is established



## Academic Calendar 2016

<i>April</i>	<First Semester> ● Entrance Ceremony ● Incoming Exchange Students Arrival ● Orientation for International Students ● Scholarship Registration for Private Regular Students Period
<i>May</i>	● Homecoming Day (every other year)
<i>June</i>	<Second Semester>
<i>July</i>	● International Festival Night ● Open Campus ● Summer Vacation (Jul - Sep) ● Summer Program in English ● Summer Program in Japanese ● Overseas Language Training Program
<i>August</i>	
<i>September</i>	<Third Semester> ● Outgoing Exchange Students Departure
<i>October</i>	● Incoming Exchange Students Arrival ● Orientation for International Students ● Scholarship Registration for Private Regular Students Period
<i>November</i>	<Fourth Semester> ● International Exchange Study Trip ● Kiin Festival (Campus Festival) ● Foundation Day (Nov 29)
<i>December</i>	● Winter Vacation
<i>January</i>	
<i>February</i>	● Spring Vacation ● Overseas Language Program
<i>March</i>	● Graduation Ceremony

## Data & Stats

### Student Numbers 2015

	Number of Students	Incoming Degree Students
Letters and Education	932	9
Science	562	4
Human Life and Environmental Sciences	571	3
<b>Undergraduate subtotal</b>	<b>2,065</b>	<b>16</b>
Master's Program	495	74
Doctoral Program	382	63
<b>Graduate subtotal</b>	<b>877</b>	<b>137</b>
<b>Total</b>	<b>2,942</b>	<b>153</b>

### Faculty Numbers 2015

	Total	Female Faculty	%
Professors	100	31	31%
Associate Professors	56	28	50%
Lecturers	14	14	100%
Assistant Professors	17	12	70.5%

### Fees 2015

(yen)

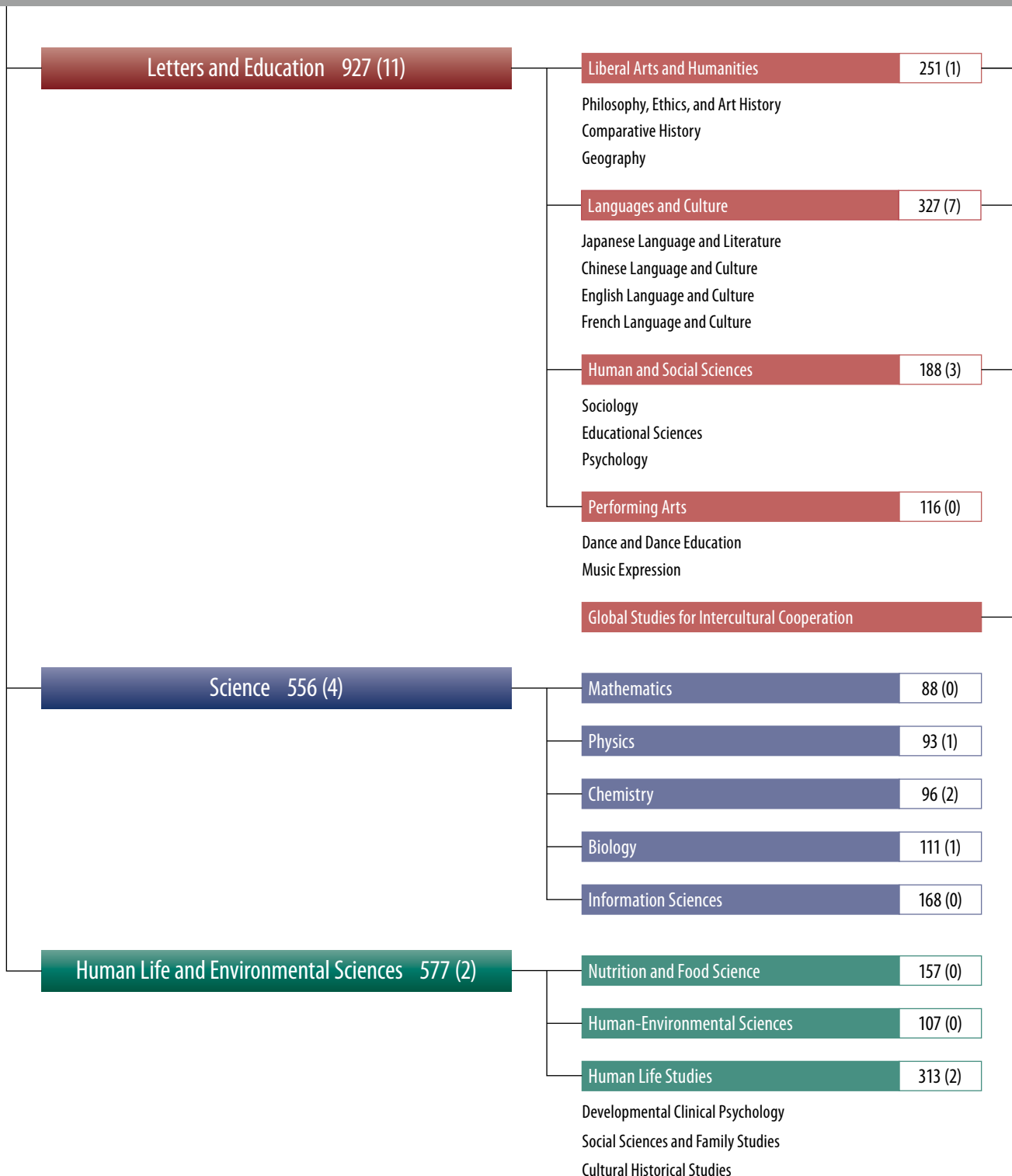
	Application fee	Admission fee	Tuition fee
Undergraduate Students	17,000	282,000	535,800/year
Graduate Students	30,000	282,000	535,800/year
Research Students	9,800	84,600	173,400/semester

\*Exchange students from partner universities are exempted from the above fees.



# Faculties/School Overview

Undergraduate Faculties 2,060 (18) Numbers of students (incoming international degree students)



L S H indicates related Faculty (L Letters and Education, S Science, H Human Life and Environmental Sciences)

Graduate School 895 (130) Numbers of students (incoming international degree students)

Humanities and Sciences

Master's Program

Doctoral Program

Comparative Studies of Societies and Cultures 117 (31)

- L Japanese Language and Literature
- L Applied Japanese Linguistics
- L English and French Languages, Literatures, and Cultures
- L Asian Languages, Literatures, and Cultures
- L Dance
- L Music
- L Philosophy
- L History and Art History
- L H Cultural and Historical Studies

Human Developmental Sciences 87 (16)

- L H Educational Science
- L H Psychology
- L H Developmental and Clinical Psychology
- L H Child Studies
- L H Applied Sociology

Gender and Social Sciences 39 (14)

- L H Social and Family Policies
- L H Geography and Environmental Studies
- L H Gender and Development Studies

Life Sciences 101 (2)

- S H Human-Environmental Sciences
- S H Food and Nutritional Sciences
- S H Biological Sciences
- S H Genetic Counseling

Advanced Sciences 147 (1)

- S Mathematics
- S Physics
- S Chemistry and Biochemistry
- S Computer Science

Cooperative Major in Human Centered Engineering

S H

Comparative Studies of Societies and Cultures 163 (42)

- L Japanese Studies in a Global Perspective
- L Language, Literature, and Culture
- L Comparative Social Studies
- L H Arts and Representational Studies

Human Developmental Sciences 99 (14)

- L H Educational Science
- L H Psychology
- L H Developmental and Clinical Psychology
- L H Child Studies
- L H Sociology and Social Policies

Interdisciplinary Gender Studies 30 (7)

- L H Interdisciplinary Gender Studies

Life Sciences 61 (1)

- S H Human-Environmental Sciences
- S H Food and Nutritional Sciences
- S H Biological Sciences
- S H Genetic Counseling
- S H Disease Prevention Sciences

Advanced Sciences 51 (2)

- S Mathematics
- S Physics
- S Chemistry and Biochemistry
- S Computer Science

Cooperative Major in Human Centered Engineering

S H



*Faculty of*  
**Letters and Education**

---

▶ <http://www.li.ocha.ac.jp/>

---





# Languages and Culture

There are four courses in the Languages and Culture Department for learning the Japanese, Chinese, English, and French languages as well as the culture of the societies speaking those respective languages. Students (1) steadily enhance their command of the relevant languages while (2) training their ability to comprehend and process written materials, and while doing so (3) acquire basic knowledge, and furthermore become exposed to the latest research on language culture by way of the language of their studies, and (4) accumulate specialist knowledge. Classes are small in size, and students learn in depth about the language and culture while developing their capacity to think, communicate and express themselves, becoming able to think deeply and communicate their thoughts.



## Japanese Language and Literature

The Japanese language is the basis of the Japanese people's thoughts and expression; classical and modern Japanese literature are the essence of Japanese culture. The course revisits the origins of this language and literature in classics and works up to modern works to offer a comprehensive view of the country's cultural issues. The course is a compass that takes students on a journey of unraveling mysteries, and enables them to form a clear picture of the intrinsic nature and current state of Japanese culture.

## French Language and Culture

The course aims to equip students with the following kinds of abilities and knowledge—that is, to acquire specialized knowledge and proficiency in the French language; gain a deep understanding of the linguistic cultures that are based on the French language and the social circumstances of French-speaking societies; and extend their view to German- and other European language-speaking cultures, or French speaking cultures around the world, and develop an interest in interaction with other cultures.

## English Language and Culture

As a language that is widely understood around the world, English has become entrusted with the very future of growing internationalization. The course offers insight into the linguistic characteristics of English and the nature of its use and study. At the same time, it provides an opportunity to learn the multitude of literary and cultural representation of the language as an expression of the thoughts, emotions, and imagination of native speakers.

## Chinese Language and Culture

Chinese is one of the most important languages in today's international community. There are many faces of China. The China that is rapidly growing as a global presence both politically and economically, albeit with many internal contradictions. The China that has 3,000 years of literary history. The China whose network of people is expanding worldwide. The course delves into the riches of Chinese culture from a variety of angles through the Chinese language.

## Liberal Arts and Humanities

### Philosophy, Ethics, and Art History

Each of these fields extends beyond the confines of the conventional framework of studies to connect directly with a variety of issues that we face today. The Eastern and Western philosophies and art history covered in this course cultivate the fundamental capabilities essential to living in society: the ability to feel, think, make appropriate judgments, communicate in a flexible manner, and accurately comprehend the visual information that surrounds us everyday.



### Comparative History

The course focuses on three major areas—Japanese history, Asian history, and Western history—with an aim to foster specialized knowledge about each area while also making various comparisons across regions and time periods to explore the world of history vertically, horizontally, and even diagonally. The course also focuses on collaboration with related fields such as geography, archaeology, cultural anthropology, and literature to encourage students to pursue a new view of world history.

### Geography

Knowing where we are in the world inspires curiosity about that place. Thence our interest grows into a desire to discover the character of the natural and social environments of which we are a part, how those environments have been formed, and what principles shape them. The course approaches all this from the standpoints of both physical and human geography to foster the intellectual ability to live in the real world.

## Human and Social Sciences

### Educational Sciences

What qualities make us human? The development of humans can only be understood outside the confines of a single discipline, by combining the fruits and methods of all areas of science. The course aims to be an integrated field of human science that takes both a theoretical and a practical approach to the process of human emergence and development—the ultimate mystery of mankind. It utilizes a variety of research methods to tackle the process of human emergence and provide insight into the mystery of human development.

### Psychology

The field of psychology strives to understand mechanisms and functions of the psychological processes of human beings, using empirical methodologies to observe and analyze human behaviors. Our curriculum enables students to gain a wide range of knowledge in psychology and research skills required in the field, as well as a deep understanding and a scientific view of human behaviors and the abilities to approach a variety of issues in a theoretical and analytical manner.

### Sociology

The course provides excellent opportunities for developing research initiatives on the social aspects of human consciousness, and social structure and its transformation. We offer programs across many fields including social theory, gender, media, culture, aging society, social policy, social welfare, sexualities, criminology and research methods. These programs reflect the intellectual backgrounds of our staff members and can prepare our students for good careers across many professions. The sociology course is committed to the pursuit of academic excellence and to fostering imaginative approaches to sociology.



## Performing Arts

### Dance and Dance Education

The course takes a multifaceted and comprehensive approach in pursuing the meaning and nature of human physical activity and expression, incorporating actual practice from sports to daily actions with a focus on dance. Of Japan's four-year national universities, Ochanomizu is the only one with a specialized major course titled "Dance." Because this is a field with such a short history, students of the course have the chance of pioneering new performances and areas of scholarship.



### Music Expression

The study of music is not merely about acquiring performance techniques and theoretical knowledge. To gain a deep understanding of music, it is crucial to apprehend the richness of human behavior that produces it. The course provides a rare opportunity in Japan to engage in the specialized study of music at a university. It emphasizes academic research and actual performance of music in the context of its relationship to a variety of other research fields such as the humanities and the social and natural sciences to offer insight into the music of today from a cutting-edge perspective.



## Global Studies for Intercultural Cooperation

A flood of cross-border items and information exist in our daily lives, and we frequently see people from overseas countries walking in the streets. What types of knowledge, sensibilities, and attitudes are we required to cultivate in this era of globalization? Global Studies for Intercultural Cooperation is an interdisciplinary program that undergraduate students in any of the three departments (Languages and Culture; Liberal Arts and Humanities; and Human and Social Sciences) can take from their second year. The program, composed of area studies, multi-cultural communication, and international cooperation, focuses



on the three Cs (Comprehension, Communication, and Collaboration) as keywords with which to think about and act toward the future of the era of globalization. Based on fieldwork together with participatory discussions, the program provides a new space of knowledge and practice, where students and faculty join hands to discover answers.

# Faculty of Science

▶ <http://www.sci.ocha.ac.jp>



## DEPARTMENT

# Mathematics

The Mathematics Department aims to develop human resources that will proactively contribute to society, such as teachers who can build their own curriculum, creative professionals with specialized skills, and researchers who engage in basic research. It strives to provide fundamental education in contemporary mathematics and lay the groundwork for independent studies, as an advanced professionals or researchers, for women who aspire to study and research mathematics, or produce and send into society capable individuals with an understanding of mathematical theory and philosophy acquired through the study and research of various subjects and mathematics in particular.





## DEPARTMENT

# Physics

The Physics Department conducts consistent education and research in a wide range of fields, from fundamental physics to applied physics, with an aim to foster in students the ability to engage in study of physical phenomena from both theoretical and experimental standpoints, and together with the faculty, cultivate new areas of physics. This involves not only developing the ability to perform physics research but also building the ability to take a reductive and multidimensional approach to problems encountered in a variety of contexts and to resolve those problems.



## DEPARTMENT

# Chemistry

Chemistry is a field of study that investigates the combinations of atoms and molecules that make up substances, and the changes that occur in those combinations, and systematizes the knowledge acquired from those investigations. Chemistry is closely connected not only to fundamental sciences such as physics and biology but also to applied fields such as industrial chemistry, agricultural chemistry, pharmacology, and medical science, its outcomes leading to the development of cutting-edge technologies. The Chemistry Department incorporates a balance of both fundamental and applied aspects in its education and research.



## DEPARTMENT

# Biology

Biological sciences have progressed dramatically in the last couple of decades along with advances in molecular and genome biology. We now understand life—formerly considered mysterious—in a systematic manner based on molecules. The scope of study is now expanding to the information flow in biological systems and interactions between life and environments. The Biology Department conducts this diverse research in collaboration with other disciplines such as computer science, physics and chemistry.



## DEPARTMENT

# Information Sciences

Information technology developed during the 20th century on the basis of computers. Today, it affects our daily life in significant ways and can be found, for example, as part of mobile phones and home electronics. Information sciences are also capturing great attention for their ability to analyze and forecast the mechanisms of nature, life, languages, and the economy.

The faculty members of the Department of Information Sciences, who are leaders in their varied fields of specialty, provide students with wide-ranging education—from theories to practice. Information sciences distinctive of a women's university are unfolded here from unique standpoints that are closely connected to daily life.





*Faculty of*  
**Human Life and  
Environmental Sciences**

---

▶ <http://www.hles.ocha.ac.jp/>

---



## Nutrition and Food Science

Food is a vital element of daily life that has a variety of aspects such as flavor, nutrition, health, cookery, processing, storage, and safety. All areas of research regarding food are important, and will continue increasing in importance. The Department of Nutrition and Food Science aims to offer a comprehensive view of the diverse fields related to food, and to equip students with specialized knowledge and practical skills required to promote the healthy and enjoyable dietary life of the people.



## Human-Environmental Sciences

The Department of Human-Environmental Sciences approaches such familiar issues as clothing, drinking water, architecture, and medical welfare from the standpoint of science and engineering with an aim to discover ways to resolve problems. Amid expectations to return to society the outcomes of research into scientific technology, the department fulfills a pioneering role by focusing on themes related to lifestyle and environment. Students in the department will study practical applications of scientific technology, timely initiatives toward issues in lifestyle-related fields, and applications in and evaluations from society regarding the outcomes of research.

## Human Life Studies

The Department of Human Life Studies consists of the three following divisions. Students will select one of three major programs offered by each division prior to entering the second year. First-year students will take divisional, fundamental and introductory courses along with liberal arts classes in order to gain experience in addressing issues from a broad and multidimensional perspective.



## Cultural Historical Studies

The Division takes an interdisciplinary approach to inquire into the various cultural phenomena surrounding daily life. While this could encompass a vast range of subjects, the division focuses on looking at the culture of “objects” in daily life from a historical and contemporary perspective. That is, it takes the elements that shape our lives such as dress, dwellings, crafts, and design, examines them from multiple angles using the methods of comparative culture, folklore, history, and art, and aims to create new cultural theories.

## Developmental Clinical Psychology

The Division offers classes in developmental psychology, clinical psychology, early childhood care and education, child studies, and child sociology as well as related methodologies. Students will learn the basic research methods of psychology such as experiments, observation, interviews, psychological testing and questionnaires and also develop the competence to communicate with and understand children in a manner appropriate to child care through practicum at the kindergarten and nursery school adjunct to the university.

## Social Sciences and Family Studies

Multiple problems surround us, such as increases in irregular employment, poor labor conditions, medical and care-giving systems in societies with a low birthrate and an aging population, discrimination, inequality, poverty, domestic violence, child abuse, and the challenge of balancing home and work life. The Division approaches these social issues from the standpoint of ordinary people and the quality of everyday life, and analyzes them using legal, political, economic, and sociological methods as well as through the framework of gender research to develop ways to resolve these issues.



# Graduate School of Humanities and Sciences

▶ <http://www.dc.ocha.ac.jp/>



## DIVISION

### Comparative Studies of Societies and Cultures

Comparative Studies of Societies and Cultures adopts a uniform educational system throughout its master's and doctoral programs to develop women with the ability and motivation to explore new horizons of knowledge in the humanities and social sciences, and contribute to the resolution of global issues in the 21st century. The programs aim to foster young researchers who will assume leading roles in academic research, and fully utilize their advanced knowledge and expertise in society. The programs also focus on overseas internships so as to cultivate in students an international perspective and the ability to communicate on a global level.

#### 1 Master's program

##### Language and culture

- ① Japanese Language and Literature
- ① Applied Japanese Linguistics
- ① English and French Languages, Literatures, and Cultures
- ① Asian Languages, Literatures, and Cultures

##### Artistic expression

- ① Dance
- ① Music

##### Socio-culture

- ① Philosophy
- ① History and Art History
- ① ② Cultural and Historical Studies

#### 2 Doctoral program

- ① Japanese Studies in a Global Perspective
- ① Language, Literature, and Culture
- ① Comparative Social Studies
- ① ② Arts and Representational Studies



# Human Developmental Sciences

Human Developmental Sciences offers diverse courses in its master's and doctoral programs that take an academic, interdisciplinary, and applicative approach to the study of humans and their development as social and individual beings. The programs aim to foster leading women researchers and professionals.

## **L H** Educational Science

Students will conduct research on education through various approaches, learning about a wide range of phenomena in education from early childhood to adulthood, in Japan and abroad, both past and present.

## **L H** Psychology

With guidance from faculty members specializing in cognition, development, education, society, personality, and clinical issues, students will conduct in-depth research in each field and acquire a wide range of advanced research methodologies and knowledge. Students will also study cutting-edge psychological research (neurophysiology, cross-national research, media psychology, health psychology, and developmental psychopathology).

## **L H** Developmental and Clinical Psychology

Students will receive training from both clinical and research standpoints from faculty members with clinical experience in hospitals, schools, and legal and industrial institutions.

## **L H** Child Studies

With guidance from faculty members who research child studies in such borderline fields as developmental psychology, sociology of education, early childhood care and education, and praxeology, students will pursue research-oriented studies that emphasize a thematic focus and the review process of research methodology.

## **L H** Applied Sociology/Sociology and Social Policies

Students will use the methodologies of the social sciences, centering on sociology, to analyze various issues of contemporary society (communication, media, gender, power, discrimination, community, family, welfare, medical care, conflict, crime, etc.), and will explore their solutions.

# Gender and Social Sciences / Interdisciplinary Gender Studies

The program will expose students to the gender analysis of various issues across traditional disciplines. One of the aims of the program is to build the ability to analyze various phenomena concerning humans, nature, society and culture from a gender perspective that is interdisciplinary, multifaceted, and global. Another aim of the program is to train students to play active roles in building gender-equal societies, and contribute to both international activities in the globalizing world and grass-roots activities in local communities. Crossing over the academic fields of social sciences, humanities, and natural sciences and pioneering new structures of knowledge, the program provides a place of learning as well as a hub for the establishment and development of gender research.

## 1 Master's program

### **L H** Social and Family Policies

Students will analyze social issues such as low birthrates, aging populations, women and work, the diversification of family life, and other lifestyle-related issues using methodologies of the social sciences including legal studies, political sciences, sociology, and economics.

### **L H** Geography and Environmental Studies

Students are expected to research various issues relating to space, place, region and environment in a globalizing world utilizing both qualitative and quantitative methods such as fieldwork, GIS or statistical analysis.

### **L H** Gender and Development Studies

Students are expected to research a broad range of issues across disciplines such as women in the globalizing world, gender and development (GAD), history and theories of feminism and sexuality, and policies and institutions concerning gender in various countries.

## 2 Doctoral program

### **L H** Interdisciplinary Gender Studies

Students are expected to develop an original research study from a gender perspective, regarding the history and theories of gender, domestic and international issues, and empirical or normative policy issues related to gender.

# Life Sciences

Under the main theme of “life and lifestyle,” students in the Division of Life Sciences research various fields related to the many meanings of the word “life.” Students pursue knowledge of the environments and lifestyles that humanity encounters within both fundamental and advanced fields—such as life science, environment, nutrition, genetics and diseases—by organically combining the academic disciplines of science, engineering and human life sciences. In the master’s program, students obtain the fundamental knowledge and skills required to excel in corporations, educational and research institutions, and health and medical institutions. Students in the doctoral program obtain their degree and the necessary skills needed to become leaders in life science fields.

## SH Biological Sciences

The Biological Sciences program conducts research on organisms from the standpoint of both universality and diversity and offers students an understanding of the various structures and functions of organisms living in a dynamic environment. The research covers a wide range of targets including genes, genomes, biomolecules, cells and individual organisms.

## SH Human-Environmental Sciences

The Human-Environmental Sciences program focuses on human lifestyles in approaching various issues related to the environment from the standpoint of science. Areas of research include the proposal and planning of urban and housing design; engineering analysis of human neurological and physiological functions; design of ergonomic devices; development of deodorant and super-absorbent materials; disinfectant and other technologies to remove harmful substances for a safe and pleasant water environment; and analysis of human evolution, mutation, and adaptation with a focus on the physical body.

## SH Food and Nutritional Science

The Food and Nutritional Sciences program addresses various issues related to food and health. Its research subjects include molecules, genes, cell, animals, and humans. Through basic and applied research, we provide scientific evidence to solve these problems. The

department aims to develop food specialists and nutrition experts, who will work in academic institutes, food companies, and clinical and community settings as leaders among registered dietitians.

## SH Genetic Counseling

Genetic counseling is a practical medical service that supports clients to gain a deeper understanding of their disease or condition in which genes and the mechanisms of heredity play a part, so that they can make decisions or accept their circumstances. Genetic counselors provide up-to-date, accurate information and psychosocial support applying counseling techniques. The course specializes in developing board-certified genetic counselors who will pursue careers in healthcare, corporate, and policy-making organizations. It has also begun research toward gathering evidence related to genetic counseling studies.

## SH Disease Prevention Sciences (Doctoral program only)

Disease prevention science is a promising approach for resolving social issues, such as the accelerated aging of society and the increasing medical expenses. Based in central Tokyo, the four institutions of Tokyo Medical and Dental University, Gakushuin University, Kitasato University and Ochanomizu University combine their strengths to foster advanced data scientists who can manage and analyze various information toward disease prevention.



## Advanced Sciences

The Division of Advanced Sciences gives students a deeper understanding of the specialized disciplines of mathematics, physics, chemistry/biochemistry and computer science, and equips them with well-grounded scientific analysis and rational processing skills based on the basics. Students in the doctoral program will work on a certification for researchers who will internationally excel in this age of globalism.

### 📌 Mathematics

This program offers advanced education and research relating to the development of mathematical theory in each field of pure mathematics—algebra, analysis and geometry. The program enables the development of interdisciplinary research skills grounded in a mathematical perspective, and is focused on cultivating professionals, teachers, researchers and others possessing advanced mathematical knowledge and operational skills.

### 📌 Physics

This program covers fields ranging from theoretical particle physics, astrophysics, statistical mechanics and theoretical condensed matter physics to fields of applied science such as applied spectroscopy, extreme condition experiments, superconductivity and soft matter. It enables students to develop an intuitive and physical understanding of physics based on the integration of theoretical and practical perspectives. In addition to improving student research skills into physics, this program teaches reductionist and pluralistic perspectives, and strives to help students develop their problem-solving skills.

### 📌 Chemistry and Biochemistry

This program focuses on the many types of molecules that form matter, as well as the molecules related to various life forms, and focuses on their composition and characteristics, synthesis and reactions, and functions and phenomena. Education and research are conducted from a wide range of perspectives, including materials science, substance production science, complex systems and life sciences.

### 📌 Computer Science

By integrating research in various fields of computer sciences—from the basics to applied computer science—this program illustrates the theories and applications of computer sciences needed in today's advanced information society. Research is conducted on techniques of mathematical science needed in next-generation computer science, computer science techniques that form the basis of modern information science and its application, and the use and analysis methods of various information derived from natural and life phenomena and human life sciences.

## Cooperative Major in Human Centered Engineering\*

This major offers educational and research opportunities in the interdisciplinary field of lifestyle engineering, focusing on engineering and product manufacturing for human beings and their lifestyles. This is not about integrating lifestyles into science and technology, but does require the creation of sciences and technologies adapted to people's lifestyles. Designed to create the safe and prosperous lifestyles and social environments of the future, this major cultivates individuals who can solve various lifestyle challenges through the adoption of everyday perspectives and the use of engineering techniques.

\* A "cooperative major" is a major operated under a joint system of education program. The Cooperative Major in Human Centered Engineering is done in partnership with Nara Women's University, allowing both institutions to take advantage of their mutual education and research resources.

### 1 Master's program 📌📌

Students learn fundamental skills in science and engineering in the basic courses—which form the basis of human centered engineering—and gain the ethics and knowledge required to become society's most valued engineers. In the specialized courses, students engage in project-based learning activities through courses such as "Sustainable Design" and "Life-saving Design." In addition, students participate in workshops on practical topics offered through the Life Innovation by Design & Engineering Education (LIDEE) workshop to learn the creative process behind "human-centered" life innovations, which focus on human activity and lifestyles. Within the framework of the international workshop, renowned overseas researchers in fields related to human centered engineering—such as architecture and

environmental engineering—are invited for short-term projects to conduct joint education and research with instructors and students. Through this program, students will perceive how vital collaboration is in solving lifestyle problems from an engineering perspective.

### 2 Doctoral program 📌📌

In the basic courses, students gain the core skills they need to write their dissertations. They will conduct their studies in a seminar format, interacting with their primary and secondary academic advisors as they conduct advanced research in the field of human centered engineering. In the specialized courses, students take on topics of importance to their individual research programs by pursuing courses directly connected with their instructors' fields of specialization.

# International Exchange

## ■ Incoming Program

### ■ Number of Incoming International Students by Country / Region of Origin

As of May 2015, Ochanomizu University has currently 217 international students with outstanding academic results from 26 countries from around the world, including undergraduate students, exchange students from partner institutions, and many postgraduate students. Along with a full-fledged support structure that includes tutor programs, the university aims to provide an international campus, holding many exchange events for both Japanese and international students to participate in.



Country/Area	Degree				Non-Degree											
	Undergrads.		Grads.		Research Students (Undergrads.)		Research Students (Grads.)		Exchange (Undergrads.)		Exchange (Grads.)		Japanese Studies Students		Total	
China	4		84	4	27		3				4		1	1	123	5
India													1	1	1	1
Indonesia	1	1	1												2	1
Korea	5		14	2			1	1	5				1	1	26	4
Laos	1	1													1	1
Malaysia			2												2	
Mongolia	1	1													1	1
Nepal			1												1	
Taiwan	1		6				2		5						14	
Thailand			4	3			3	3	1						8	6
Vietnam			4	2			1	1	2						7	3
Afghanistan			2	1			1	1							3	2
Turkey									1				1	1	2	1
Egypt			1	1											1	1
Croatia			1	1											1	1
Finland									1						1	
France									1		2				3	
Germany									1						1	
Hungary							1	1							1	1
Italy			1	1					2		2		1	1	6	2
Poland			1	1					1				1	1	3	2
Russia			2	2			1	1					1	1	4	4
Slovakia	1	1													1	1
Switzerland													1	1	1	1
U.K.									1				1	1	2	1
Ukraine							1	1							1	1
<b>Total</b>	<b>14</b>	<b>4</b>	<b>124</b>	<b>18</b>	<b>27</b>	<b>0</b>	<b>14</b>	<b>9</b>	<b>21</b>	<b>0</b>	<b>8</b>	<b>0</b>	<b>9</b>	<b>9</b>	<b>217</b>	<b>40</b>

\*left: Total  
right: MEXT scholarship students

### ■ Scholarships

- Mayako Ikeda Memorial Fund
- Tadashi Ikeda Memorial Fund
- Japanese government scholarships (university recommendation)
- JASSO Honors Scholarship for Privately Financed International Students
- Student Exchange Support Program (Scholarship for Short-term Study in Japan)
- Private organization-scholarships, etc.

### ■ Supports and Events

- Tutor system
- Social gatherings
- International Festival Night
- Consultation room
- International Exchange Study Trip etc.

### ■ Residence Halls

- International Student House: International students as well as Japanese students live in the residence hall. Natural interaction with students of different nationalities in the course of everyday life enables students to acquire an international perspective.
  - Boarding fee: 4,700 yen/month (Plus a total of approximately 12,000 yen for utilities.)
  - Period of residence: For international students, the completion date of the shortest course of study
- Koishikawa Residence Hall
- Students Community Commons

### ■ Career/Employment Support

We hold frequent career support events, ranging from the basic ten employment guidance sessions each year to lectures on how to fill out application forms and practical advice about interviews. Our current focus is on one-on-one counseling to respond to the diverse career-related aspirations of each student.



# ■ Ochanomizu University Summer Program in English

With the goals to educate people who wish to pursue an active career on the international stage, and to promote student interchange, Ochanomizu University offers an intensive study program in English during the summer, and actively invites students of overseas partner universities to from multicultural classes with Ochanomizu students.

Period: August 1-8, 2015 (8 days)

## Courses (2015)

### ■ Theme I: Contemporary Perspectives on Social Policy, Education, Family and Development

This course, taught by an interdisciplinary team of five professors, will present various perspectives on social policy, education, family law and child development in contemporary Japan. Each session consists of lectures and discussions. Students are expected to actively participate in class discussions.

### ■ Theme II: Time and Forms in Nature

Nature is filled with structurally diverse substances and living creatures, which are altered in a time-dependent manner. The physical nature of form (structure or assembly) and its change are figured out by the sciences, especially mathematics, physics, chemistry, biology and information science. The lectures examine and explain the science on time and forms, and are given in English by teaching staff in the Faculty of Science. Each lecturer will present, in simple terms, the latest areas of interest in their own field of expertise. This will ensure an overall comprehensive approach.

### ■ Theme III: Japan in the World, World in Japan: Transformation of International Linkages

In this globalization age, the ways of international linkages between Japan and other parts of the world are rapidly changing. In this theme, students will study the issue of dynamic global linkages from multiple aspects: linguistics, world history, international marriages, migrations, China-Japan relationships and food issues. Through the course, it is discussed what the ideal ways of future international linkages are, for Japan and the world.

#### Optional classes: Introduction to Japanese Culture

**Seminar 1:** Not Only Rice! Diversity in Japanese staple food [Food culture]

**Seminar 2:** Enjoy Japanese Language! [Language]

**Seminar 3:** Ghibli Studio's Two Different Axis: Why is Ghibli Studio so important in Japanese Anime? [Subculture/animation]



# ■ Ochanomizu University Summer Program in Japanese

Period: July 6-24, 2015 (3 weeks)

This is a 3-week program for students who are studying the Japanese language at partner universities. This program aims to improve academic Japanese skills through comprehensive language classes and “project work.” Students also have opportunities to meet Japanese people through various events.

## Program

- **Japanese language:** A well-balanced course that focuses on the four language skills; listening, speaking, reading and writing.
- **Project Work:** A framework designed to develop academic language skills. The tasks will include research assignments, written reports and an oral presentation. All of the projects will consider topics in Japanese society and culture.
- **Afternoons and weekends:** Flower arrangement, Kimono wearing and other culture classes and field work.

## »» Voices from Students

The contents of this program are rewarding. The lessons are well-structured and are tightly linked with the projects we are doing. After-class activities are fine and allowed us to gain substantial understanding of Japanese society. [J]

During my time in Ochanomizu University, I have learned various Japanese native expressions which are very useful for my future studies, such as the expressions for explaining situations when you are confused or in a disagreement with others. [J]



2015 Summer Program at

<http://www.ocha.ac.jp/intl/ocgl/en/others/summerprograms.html>

# International Exchange

## Partner Universities

Partner Universities: 65 Universities and Colleges in 23 Countries and Regions

### Asia (25 partner universities)

#### China

- Beijing Foreign Studies University (2/1)
- Dalian University of Foreign Languages (1/0)
- Fudan University (1/0)
- Peking University, Department of History (0/0)

#### Indonesia

- Indonesia Institute of the Art Denpasar (0/0)

#### Korea

- Dongduk Women's University (1/0)
- Ewha Womans University (0/5)
- Keimyung University (2/0)
- Konkuk University (1/1)
- Kyungpook National University (1/0)
- Pusan National University (0/0)
- Sookmyung Women's University (0/0)
- The School of Dance, Korea National University of Arts (0/0)
- Korea University (0/0)

#### Taiwan

- Kainan University (0/0)
- National Chengchi University (2/0)
- National Taiwan University (0/2)
- Taipei National University of the Arts (0/0)

#### Thailand

- Asian Institute of Technology (0/0)
- Chiang Mai University (0/0)
- Prince of Songkla University (0/0)
- Thammasat University (0/1)

#### Vietnam

- Hanoi National University of Education (0/0)
- Hanoi University (1/0)
- Institute of Genome Research, VAST (0/0)

### Oceania (3 partner universities)

#### Australia

- Monash University (0/1)
- The University of New South Wales (0/3)

#### New Zealand

- University of Otago (0/2)

### Middle East (1 partner university)

#### Turkey

- Ankara University (0/0)

### Africa (2 partner universities)

#### Egypt

- Cairo University (0/0)
- Mansoura University (0/0)

### Europe (27 partner universities)

#### Austria

- Vienna University of Technology (0/1)

#### Czech Republic

- Charles University (0/2)

#### Finland

- Centria University of Applied Sciences (0/2)
- University of Tampere (1/2)

#### France

- Blaise Pascal University (Clermont-Ferrand II) (0/2)
- École Supérieure de Physique et de Chimie Industrielles (0/0)
- Institut de Recherche pour le Développement (0/0)
- Paris Diderot University (Paris 7) (0/3)
- The Bordeaux 1 University (0/0)
- University of Strasbourg (0/3)

#### Germany

- Bergische University of Wuppertal (0/3)
- Hochschule Bremen, University of Applied Sciences (0/0)
- University of Cologne (0/1)

### North America (7 partner universities)

#### USA

- Purdue University (0/0)
- University of California, Davis (0/0)
- University of California, Riverside (0/0)
- University of California, San Diego (0/0)
- Vassar College (0/1)
- Southern Oregon University (0/1)
- Albright College (0/0)

#### Italy

- Sapienza University of Rome (2/2)
- The International School for Advanced Studies (SISSA) (0/0)
- University of Naples – L'Orientale (0/0)
- Collegio Nuovo (0/2)

#### Poland

- The University of Warsaw (0/2)

#### Romania

- University of Bucharest (0/0)

#### Slovakia

- Slovak University of Technology (0/1)

#### Sweden

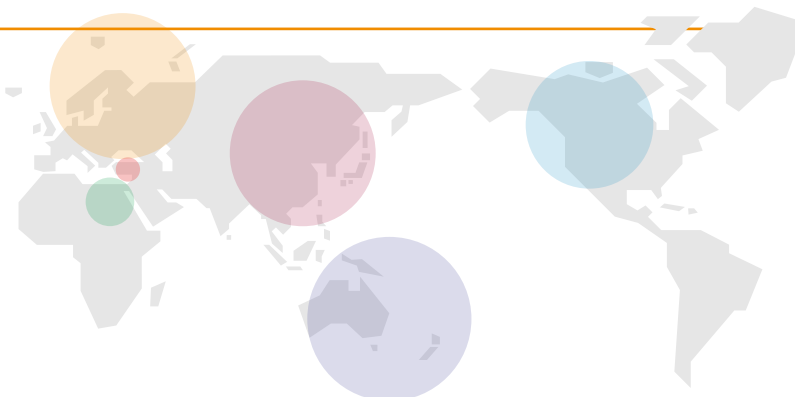
- Linköping University (0/3)

#### UK

- King's College London (0/0)
- The Queen's College, University of Oxford (0/1)
- The School of Oriental and African Studies, University of London (0/0)
- The University of Manchester (0/1)
- The University of Hull

#### Russia

- Tomsk State Pedagogical University (0/0)



(Incoming exchange students/Outgoing exchange students in 2015)

## Voices of Incoming International Students

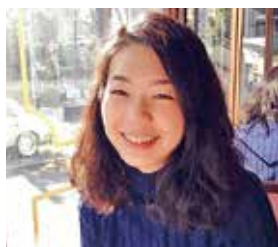


### Bajracharya Dinu

**Program:** Graduate School of Humanities and Sciences  
**Affiliation:** Doctoral Student in Human Developmental Science  
**Country:** Nepal  
**Period:** April 2014–March 2017

Although I had been selected for MEXT (Japanese government scholarship) to continue my doctoral course at one of the private universities of Tokyo, I decided to join Ochadai for it. My colleagues have been asking me why???

For me, a doctoral course is not only limited to academic degree. It's more about the implementation of theoretical knowledge for the welfare of society with the consideration of many macro as well as micro factors. Indeed, "Ochadai" became a perfect platform to achieve that goal and I am able to meet with world-class professors and instructors who fully support my ongoing research and project work in Nepal. Moreover, I also got a wide-range of opportunity to interact with many scholars and veterans at national and international universities, as well as international cooperation organizations. "I am proud to be at Ochadai."



### Hung Yuh-Chain

**Program:** Graduate program research student  
**Affiliation:** Master's Student in Gender and Social Sciences  
**Country:** Taiwan  
**Period:** April 2015–March 2016

Being a student again is a second chance to pursue my passion for academics. In addition, being a research student at Ochanomizu University is a wonderful opportunity to continue my research in Japan. I'm really happy and lucky to have great teachers to look up to, as well as fun and talented classmates to study with. I also appreciate the staff of the International Affairs Division who gave me a lot of support and opportunity to share my experience here. If I were to give advice: take your time to find what you really want, and use your time wisely, create a plan and stick to it. And don't forget to make good use of the library, which is my favorite place at Ochadai.



### Xatgul Mirxat

**Program:** Graduate School of Humanities and Sciences  
**Affiliation:** Master's Student in Division of Gender and Social Sciences, Department of Geography and Environmental Studies  
**Country:** China (Xinjiang University)  
**Period:** April 2014–March 2016

If I said that my year at Ochanomizu University has been one of the best in my life, it would sound obvious. Actually, it has been. My experience at Ochanomizu University has been brilliant. The level of teaching is up to the highest standards and the lifestyle is also great. Living in a wonderful city like Tokyo and studying in one of the most famous universities in Tokyo let me know people from all over the world, and feel like I am "one of them." Ochanomizu University allows me to go through something deeper, discussing thesis and choosing my own research path. Ochanomizu University helped me to fulfill one of my career ambitions, together with a precise and ambitious development plan I gained from my education.



### Luyiyun Liang

**Program:** Undergraduate program  
**Affiliation:** Department of Biological Sciences, Faculty of Science  
**Country:** China  
**Period:** April 2014 – March 2018

Girls in the department of biology are very friendly. We always go to the zoo or aquarium, play Real-life Room Escape in Shibuya, share snacks at lunchtime and study together for exams in the library. Professors are also very nice and patient. Because of the small number of students in class, students can have deeper communication with teachers. When I was a freshman, I went to Professor Hatta's office twice a week for completing reports for his class, and he always gave me valuable hints and sometimes cookies. The environment at Ochanomizu University is perfect too. I love amazing cherry blossoms in April and refined buildings. The location of the school is convenient to access the main stations in Tokyo such as Ikebukuro, Shinjuku and Shibuya.

## Voices of Outgoing Ochanomizu Students



### Yoshiko Tanita

**Program:** Student Exchange Program  
**Affiliation:** Division of Comparative Literature and Cultures, Graduate School of Humanities and Sciences  
**Period:** September 2014–July 2015

The impetus for my decision to study abroad came from some advice I received from my academic advisor when I started my doctoral program. "Considering the future of your research activities," my advisor said, "you should think about studying abroad."

The suggestion came as a surprise. At the time, I had just gotten married. At first I was really uncertain about it. As I listened to friends who had studied abroad tell me about their experiences, however, I started to give the idea more serious consideration. I attended a study abroad information session at Ochanomizu, where I found out that we had a partner institution that could accommodate my research needs, and that I could receive financial support in the form of a scholarship. Boosted by the support of my instructors and family, I decided to study abroad at Peking University.

What I learned through my year abroad is that the benefits of studying overseas go well beyond research and language skill development. By living overseas and interacting with local residents, I was able to experience local customs and culture, and experienced life as a series of new discoveries. I built deeply trustful relationships with Chinese students, and I have maintained those friendships even after returning. Today, I continue to think about how I might use what I gained during my study abroad experience as I pursue my research activities and language studies.



### Tomoko Kawakami

**Program:** Student Exchange Program, short-term language studies  
**Affiliation:** Languages and Culture Department, Faculty of Letters and Education  
**Period:** July–August 2012 (United Kingdom, language studies)  
 February–March 2014 (Russia, language studies)  
 August 2014 (Germany, language studies)  
 September 2014–January 2015 (United Kingdom, Student Exchange Program)

I used my summer and spring breaks to participate in short-term study abroad workshops in the United Kingdom, Russia and Germany, and learned the local languages and cultures. I also went on a long-term student exchange program to the University of Manchester, where I pursued a more in-depth program in linguistics—my major field of study.

Ochanomizu University both provided intensive counseling before I went on my study abroad programs and directed me to many scholarship opportunities. As a result, I did not have any emotional or financial stress about my experiences, and was able to fully concentrate on my studies. During my time overseas, I was able to encourage and support other friends studying all over the world, and to receive the same from them. This mutual support proved very reassuring.

At the University of Manchester, I volunteered at a multilingual research institution—a type of organization common to the UK—and took classes that allowed me to work on practical skills in linguistic experiment design and implementation. With these, I created opportunities to challenge myself.

Even after my study abroad sessions ended, there were many opportunities for me to share my experiences with others at the university. This helped me really organize my thoughts around the lessons I had learned overseas.

My decision to make the most of life as a student by participating in Ochanomizu's student exchange program was the best possible choice I could have made. It is my heartfelt hope that many more students will take advantage of the opportunity to study abroad.

# Centers [arranged by segment and listed alphabetically]

## Campus Educational System Reform Division

- **Center for Research and Development of Education**  
Is a campus-wide education and research facility, contributing to the university's education and research activities.
- **Foreign Language Education Center**  
Promotes language education in both undergraduate and graduate courses with the aim of improving students' language proficiency. It also administers the Language Study Commons, the Writing Center, and "English Camp" held in Japan.
- **Learning Support Center**  
Is a campus-wide education and research facility that offers integrated learning support services to students such as consultation and guidance.
- **Leading Graduate School Promotion Center**  
Is a special unit funded to serve Japan's Ministry of Education with the development and promotion of the government-initiated Program for Leading Graduate Schools provided with the establishment of the sub-major course of Science and Technology for Global Leaders.

## International Division

- **Global Collaboration Center**  
Aims to investigate, research, and take action on ways of assisting Afghanistan and other developing countries that face difficult challenges.
- **Global Education Center**  
Aims to foster global-minded human resources by providing education, guidance, and advice to international students, promoting various international exchanges, and dispatching our students abroad.
- **Global Human Resource Development Center**  
The Global Human Resource Development Center pursues activities based on the following four core objectives in an effort to cultivate global-minded human resources. It conducts educational activities to cultivate students' global awareness, promotes programs to increase campus globalization, provides support to strengthen the dissemination of information in foreign languages, and offers support and advice related to study abroad opportunities.

## Research Advancement Division, Education and Research Department

- **Center for Comparative Japanese Studies**  
Organizing the Symposium and Consortium, links Japanese studies conducted around the world and promotes international exchange and collaborative research.
- **Center for Informational Biology**  
Performs theoretical study of all fields in biology by observing organisms from a viewpoint of its component atoms or genes, and by analyzing the data systematically using theories in computational science.
- **Center for Simulation Sciences**  
Forms research sites that integrate the humanities and sciences, and collects, shares and analyzes a range of simulation methods.
- **Center for Soft Matter Physics**  
Encourages collaborative research and welcomes young researchers such as postdoctoral fellows and graduate students who have work experiences at companies.
- **Education & Research Center**
- **Glycoscience Institute**  
Is based on the results of glycan research accumulated by our University over 60 years, and promotes the research of glycoscience and the multi-faceted education of students.
- **Institute of Environmental Science for Human Life**  
Investigating and educating the fields related to food and nutritional sciences including food education from the point of view of food environment to improve the quality of our life.

## Research Advancement Division, Infrastructure Department

- **The Instrumental Analysis Center**  
Aims to provide researchers and students with a wide use of instruments for scientific analyses, including chemistry, biology, molecular biology, physics, food and nutritional sciences, environmental sciences, and so on.
- **Experimental Animal Facility**  
Is a campus-wide facility that aims to manage animal experiments and breeding for research and educational purposes.
- **IT Center**  
Is a campus-wide facility that aims to support computer-based activities and network-based communications within and outside the campus.
- **Radioisotope Research Center**  
Oversees academic research and education on radiation, manages radiation safety, and provides health monitoring for faculty and students that deal with radiation.

## Social Collaboration Division

- **Life-World Watch Center (LWWC)**  
Established in 2003, conducts development, research, and investigation as well as education and training in life safety and security and environment-related educational structures.
- **Marine and Coastal Research Center**  
Promotes studies of coastal organisms and environments, and aims to deepen society's understanding of natural sciences and the environment.
- **Science & Education Center**  
Aims to popularize research conducted in the various fields of science and hopes to create a culture of science.

## Community Support Division

- **Health Care Center**  
Health Service Center is committed to maintain the health of students and college members, by providing daily medical service, and executing annual health examination. The students and members are obliged to undergo the periodical health examination to recognize one's health condition, and to prevent the prevalence of infectious diseases such as tuberculosis. Psychiatric consultation is available (3 days/ month) on reservation.
- **Student and Career Support Center**  
Seeks to meet student's needs and support their diverse lifestyles through counseling services on learning, employment, study abroad, and lifestyle-related concerns. And this center serves as a campus-wide entity that supports students seeking employment. Specialized career advisors offer advice on job hunting and career building.

## Organizations working to promote greater research

- **Institute for Education and Human Development**  
Conducts studies on the formation of human developmental science for restructuring the gap-widening society, and investigation into early childhood educational environments, and studies on the support system for hikikomori (social withdrawal) among Japanese youth and their families.

## Research Organization for the Promotion of Global Women's Leadership

- **Institute for Global Leadership**  
Plays a central role in developing leadership training curriculums and support programs for female researchers and promoting gender equality on campus.
- **Institute for Gender Studies (IGS)**  
Was initially established as the first national archive of women's studies in 1975. IGS promotes comprehensive research and develops domestic and international networks for gender studies.



# Science and Technology for Global Leaders special course



In anticipation of a borderless future, this graduate science major (offered by the Advanced and Life Sciences Divisions) at Ochanomizu University is complemented by the exquisite 5-years “Science and Technology for Global Leaders” sub-major program of the Master’s and PhD of Science, and integrates multidisciplinary theoretical foundation with practice-based work.

In an English language, highly competitive and fun study environment, students with a global perspective and a majority of non-Japanese teachers set common scientific goals and work together towards achieving them.

The program’s strong collaboration with local and international academia and industry bodies opens

extraordinary opportunities for students to research abroad and build foundations in their careers as SciTech leaders through internships and global networking.

## Library

The Ochanomizu University Library has a collection of approximately 710,000 books and 11,000 e-journal titles comprising, in addition to material on general studies and specialized fields, a wide range of material unique to the university such as gender studies and child education. The library also provides a lineup of digital resources including databases and electronic journals, and audio-visual material including DVDs and CDs.



The Learning Commons, of which the university is justifiably proud, is constantly bustling with vibrant student energy. Internet service is available throughout the library. Wireless access is also available at many common areas in the campus.



The Career Café offers a place for casual conversation and functions as a new intellectual space for students to host their own events.



# Campus Map



1 Library



2 Student Service Building



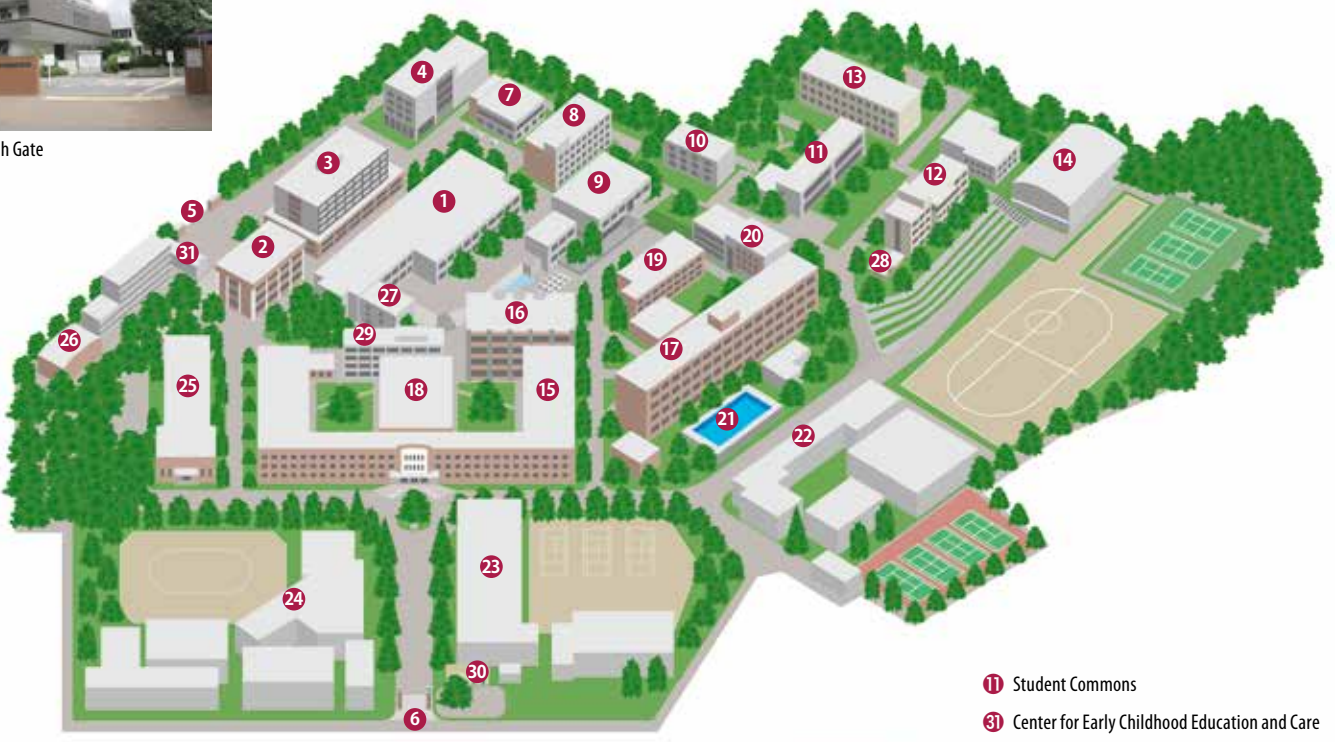
3 Letters & Education Building 1



4 Inter-Faculty Building 1



5 South Gate



11 Student Commons  
31 Center for Early Childhood Education and Care



6 Main Gate



7 Inter-Faculty Building 2



8 Inter-Faculty Building 3



9 Cafeteria



10 Student Club Facility



12 Graduate School Building



13 Letters & Education Building 2



14 University Gymnasium





15 Main Building



16 Comprehensive Research Building



17 Science Building 1



18 Auditorium



19 Science Building 2



20 Science Building 3



21 Swimming Pool



22 Junior High School



23 High School



24 Elementary School



25 Kindergarten



26 Izumi Nursery



27 Ochadai Academic Production Research Building



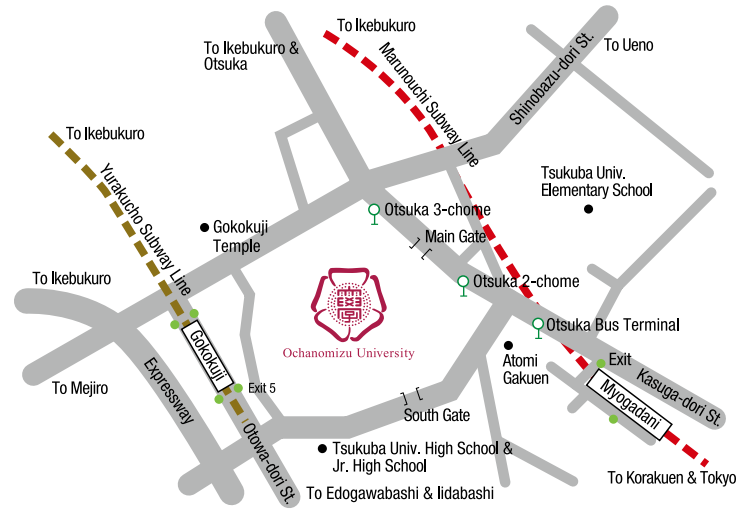
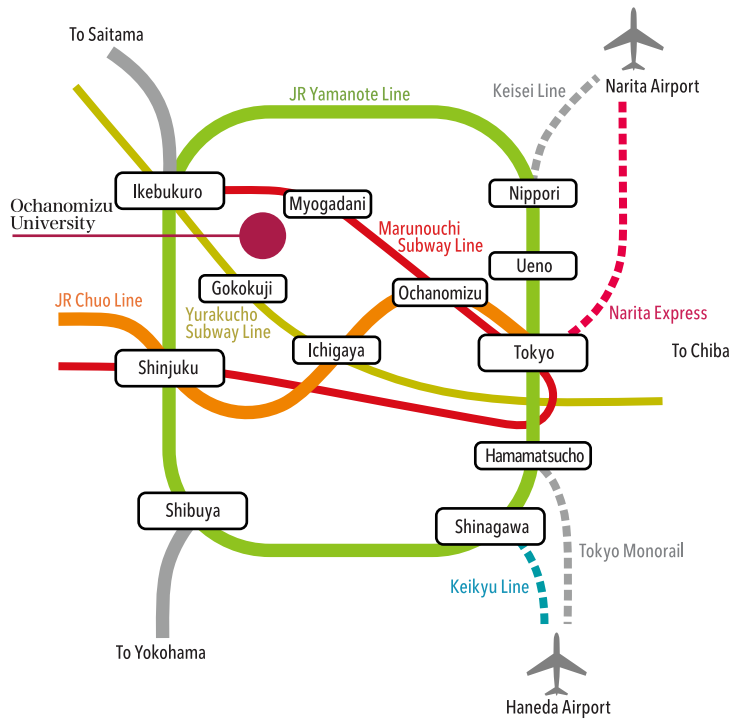
28 Tea-ceremony House



29 Main Building 2, Human Life and Environmental Sciences Building



30 Ochadai Information Plaza



- 7-minute walk from Myogadani Station on the Tokyo Metro Marunouchi Subway Line
- 8-minute walk from Gokokuji Station Exit 5 on the Tokyo Metro Yurakucho Subway Line
- 1-minute walk from Otsuka 2-chome Bus Stop (Toei Bus)

## Ochanomizu University International Affairs Division

2-1-1 Otsuka, Bunkyo-ku, Tokyo, Japan 112-8610  
 TEL. +81-3-5978-5722  
<http://www.ocha.ac.jp/>  
 E-mail ryugai@cc.ocha.ac.jp